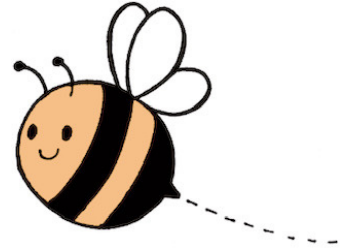




Pediatric Learning Center, Inc.
Therapy, Education, & Support

2023-2024 Annual Report



Prepared by: Elizabeth McMahon Kraus, MA, CCC-SLP
Executive Director, Pediatric Learning Center, Inc.



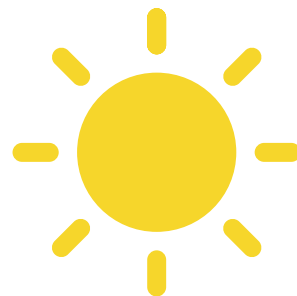


Table of Contents

About Pediatric Learning Center, Inc.

Board of Directors

Services Provided

Liz's Story

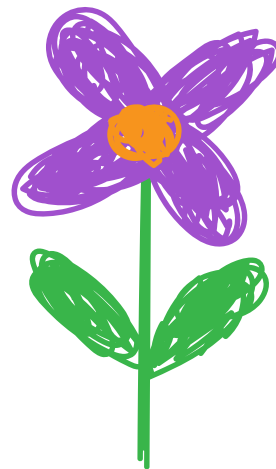
Data FY 2023-2024

Highlights FY 2023-2024

Event Recaps FY 2023-2024

Community Impact

Contact Us



About PLC



Vision

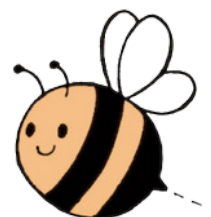
The Pediatric Learning Center, Inc. (PLC) is a nonprofit organization serving children and their families throughout the Mid-South. The Pediatric Learning Center, Inc. was established in October 2022 with a desire to provide therapy, education, and support services utilizing a family-centered team approach.

Mission

The mission of the Pediatric Learning Center, Inc. is to provide a comprehensive, evidence-based team approach to education and intervention that allows for collaboration with community partners while focusing on services for children and their families in a family-centered environment.

Mascot

Our mascot is the bumble bee. Why the bee? Bees work together as a team to help their community. Bees remind us that we need others in our life. When we work together, we can achieve great things.



Board of Directors

Our dedicated Board of Directors bring leadership, knowledge, innovation, and a desire to grow pediatric therapy and education programs and services for children and families in our community.

Horace "Ronnie" Taylor
Board Chairman

Bowen Horton
Board Treasurer

Amy Foster, MSpEd
Board Secretary

Bonnie Walker
Board Member

Elizabeth McMahon Kraus, MA, CCC-SLP
Executive Director



Services Provided



Speech & Language Therapy

Helps children understand, communicate their wants and needs, interact with others, produce sounds correctly, and speak fluently.

Occupational Therapy

Focuses on the ability to eat, interacting with others, and playing with a variety of toys to include reaching, grasping, and toy manipulation skills.



Feeding Therapy

Addresses the coordination of oral motor movements, while also working on tolerating, and interacting with different food textures.

Screenings and Evaluations

Gathers information from standardized assessments clinical observation, play-based interactions, and caregiver's concerns to develop a personalized plan to address the child's individual needs.



Liz's Story

Liz is an active and curious three-year-old who, despite being born full-term, faced challenges in meeting her developmental milestones. Her family, recognizing these delays, referred her to the Tennessee Early Intervention System (TEIS) in November 2022. In May 2023, Liz began receiving services with the Pediatric Learning Center, Inc.

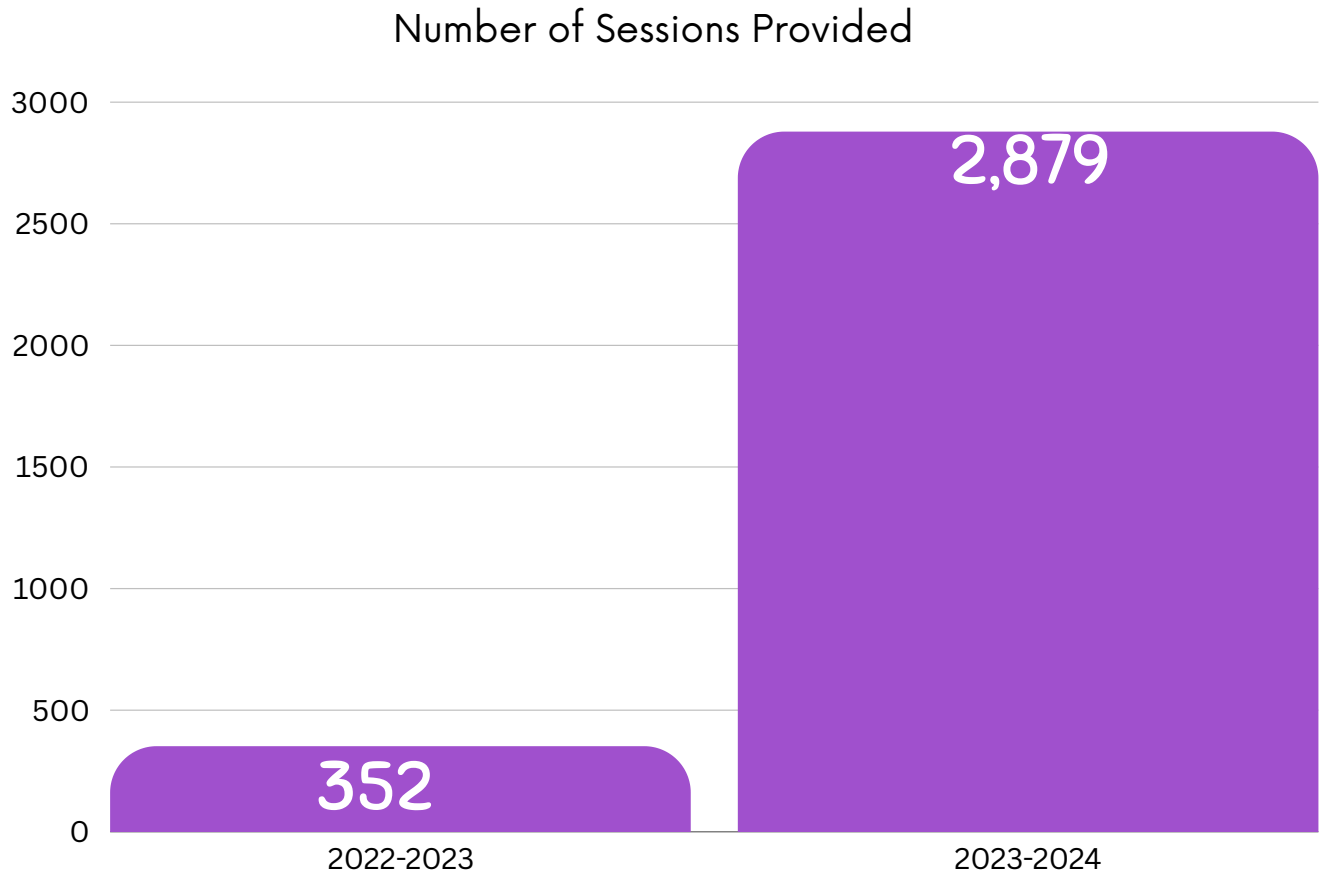
As a bilingual Spanish-speaking family, they were matched with Corey Fawcett, a bilingual speech-language pathologist, and Hope White, an occupational therapist, ensuring Liz received tailored support. Before starting early intervention, Liz struggled with communication and self-regulation, often feeling frustrated due to her inability to express herself. In April 2024, she received a communication device using the Tobii Dynavox Snap Core application, which has since transformed her ability to engage with others.

Liz's mother is a strong advocate for early intervention, praising the Pediatric Learning Center, Inc. for its comprehensive and compassionate approach. She shared, "My child has improved tremendously in communication, daily routines, and interactions with others. We received invaluable advice and tools to help teach our daughter. We are extremely grateful for PLC, especially the therapists Corey and Hope. They were very patient, loving, professional, and knowledgeable. The tools they provided will continue to benefit our family, and they will forever be in our hearts."

Liz's journey highlights the importance of early intervention services in helping children reach their full potential. Through dedicated care and specialized support, the Pediatric Learning Center continues to transform lives—one child at a time.



Data FY 2023-2024



The Pediatric Learning Center, Inc. started providing pediatric speech, language, occupational, and feeding therapy and education services in March 2023. All of our services have been provided in the child's home, childcare center, community, and/or via telehealth. During Fiscal Year 2023-2024, we provided 2,879 individual therapy sessions, and served 379 families across Shelby and Tipton counties.



Highlights

FY 2023 - 2024



August 2023

**Received grant from
TEIS for additional
therapy services.**

August 2023

**Potty Training Panel
with the Down
Syndrome
Association.**

September 2023

**Provided Speech
Screenings at local
preschools.**

October 2023

**1st Fundraising Event
Sunday at the Side
Porch.**

April 2024

**In-Network with
BlueCare &
TennCare Select
Insurance.**

June 2024

**1st Annual
Party at the Park!
Event.**



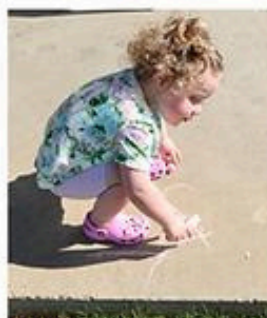
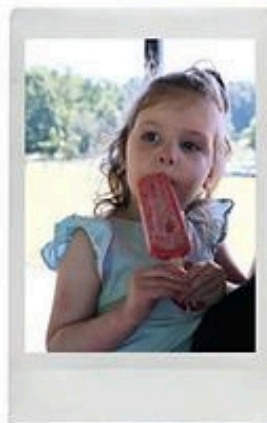
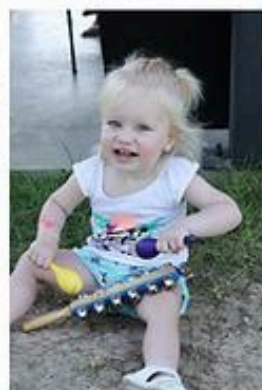
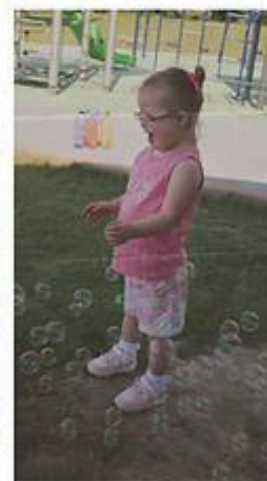
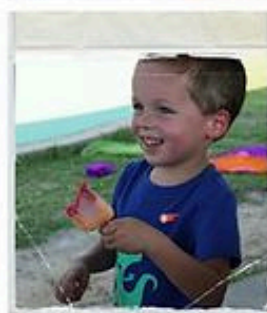
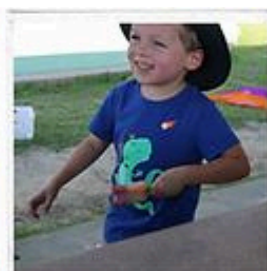
Event Recap: Sunday at the Side Porch

On October 22, 2023, we hosted our Inaugural Sunday at the Side Porch fundraising event. We had a wonderful turnout for the event as we celebrated our first year of services with a delicious lunch from the Side Porch Steakhouse, silent auction, and fellowship with our donors and supporters!

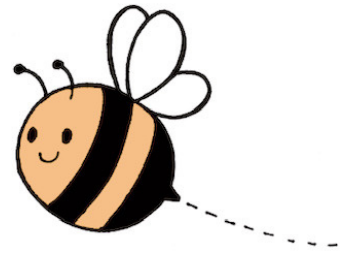


Event Recap: Party at the Park!

On June 22, 2024, we hosted our Inaugural Party at the Park! for the families we serve. Although it was hot, we had a wonderful time with music provided by Mikenzie House, balloon animals, yard games, snacks, face painting, and popsicles provided by Dipsticles! After we partied at the park, we enjoyed lunch at the Owners Box in Lakeland where they donated a portion of their profits for the day to PLC.



Community Impact



The Tennessee Early Intervention System (TEIS) Memphis Delta District has long struggled with socioeconomic disparities, which have a direct impact on children's access to quality healthcare and developmental services. Poverty, limited access to pediatric specialists, and a lack of awareness of developmental disorders have exacerbated developmental challenges among children in the region. Early intervention has been crucial in mitigating these challenges, ensuring that children from all backgrounds have the chance to reach their developmental milestones.

The success of the Pediatric Learning Center, Inc. (PLC) is deeply intertwined with our collaboration TEIS. TEIS is a statewide program designed to help children from birth to age five with developmental delays or disabilities. By connecting families with resources and pediatric professionals, TEIS ensures that children receive the care they need at a crucial stage of development. In the Memphis Delta District, PLC and TEIS work together to streamline referrals, assessments, and service delivery, ensuring that children receive timely interventions.

In the past year alone, PLC provided 2,879 individual sessions for 376 families, ensuring early identification and support for at-risk children. The continued investment in early intervention programs will be essential in maintaining this momentum and ensuring that every child in the Memphis Delta District has the opportunity to reach their full potential.

The success of the Pediatric Learning Center serves as a powerful example of how community-driven healthcare initiatives can address longstanding disparities and create lasting change, one child at a time.



Pediatric Learning Center, Inc.
Therapy, Education, & Support

8496 Wilkinsville Rd, Ste. 101-128
Millington, TN 38053
(901) 290-8558
www.plcmemphis.org



Follow us on social media:
Pediatric Learning Center

